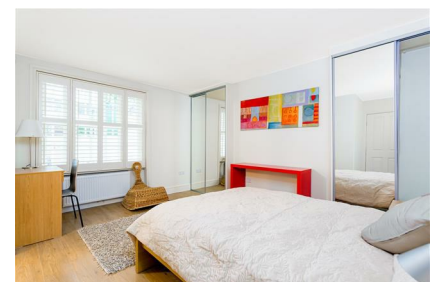


Parkheath

Sold on Service

Belsize Road NW6

£3,200 PCM (£738 per week) - Camden Band C



Well-presented 2-bedroom apartment
Lower ground floor of an attractive period conversion
Spacious reception with open-plan kitchen
Two bedrooms, each with en suite bathrooms
Close to South Hampstead Overground and Swiss Cottage

Own private entrance
Private paved rear garden
Doors leading directly onto the garden
Wood flooring throughout
EPC: Rating D, Council Tax: Camden band C

West Hampstead Office 020 7794 7111

Belsize Road

Approximate Gross Internal Area = 64.89 Sq m / 698 sq ft



Measured in accordance with RICS guidelines. Every attempt is made to ensure accuracy

However all measurements are approximate.

The floor plan is illustrative purposes only and is not to scale

ELLIE CLAIRE PHOTOGRAPHY LTD

www.ellieclairephotography.com

The particulars do not constitute part of an offer or contract. The particulars, including text, photographs and plans, are for the guidance only of prospective purchasers/tenants and must not be relied upon as statements of fact. The descriptions provided therein represent the opinion of the author and whilst given in good faith should not be construed as statements of fact. Nothing in these particulars shall be deemed a statement that the property is in good condition or otherwise or that any services or facilities are in good working order. All measurements are approximate